



**AI Is
The New Electricity
(For Retail)**

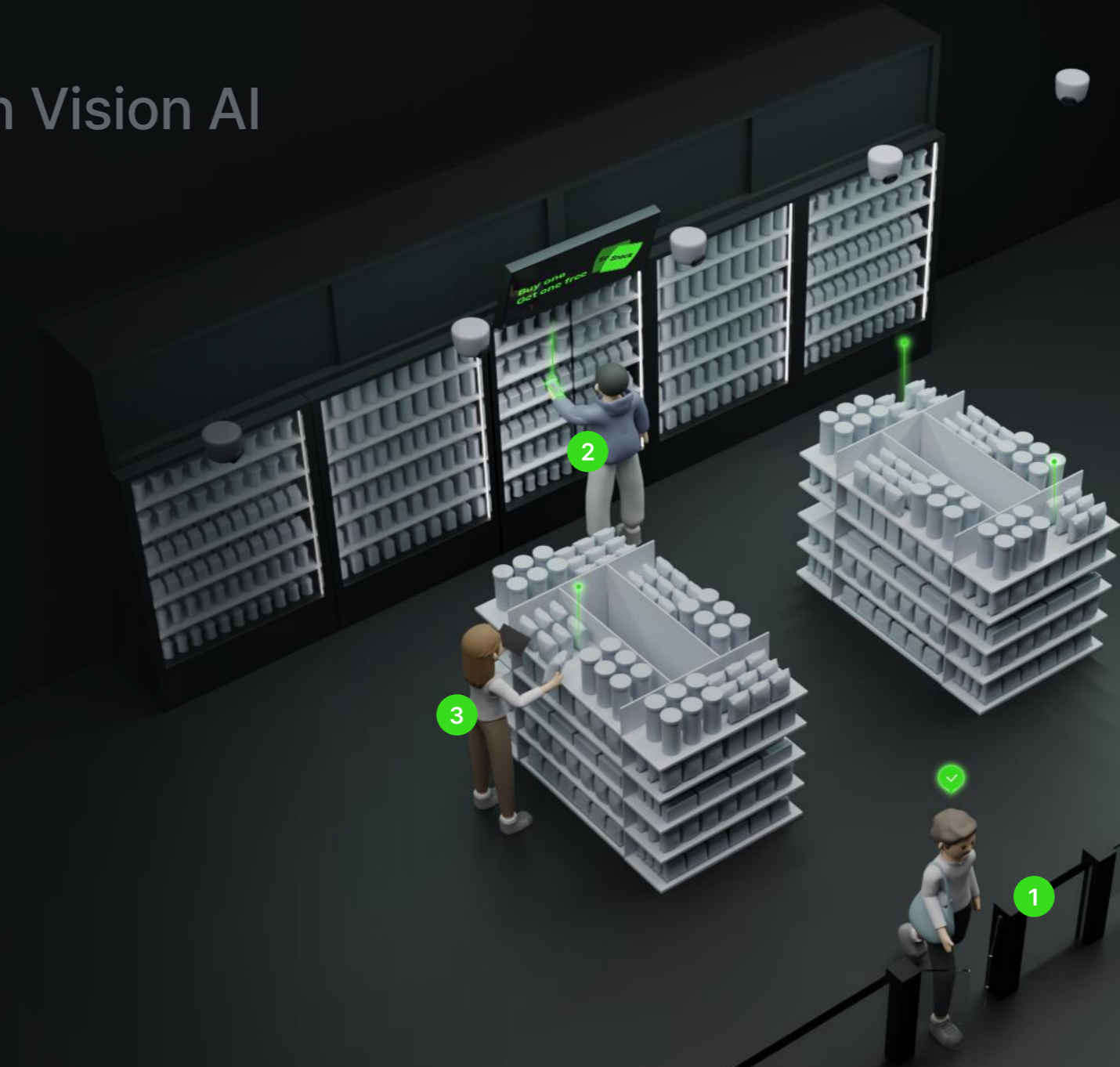
Fainders.AI

SOLUTION

Automate Your Store With Vision AI

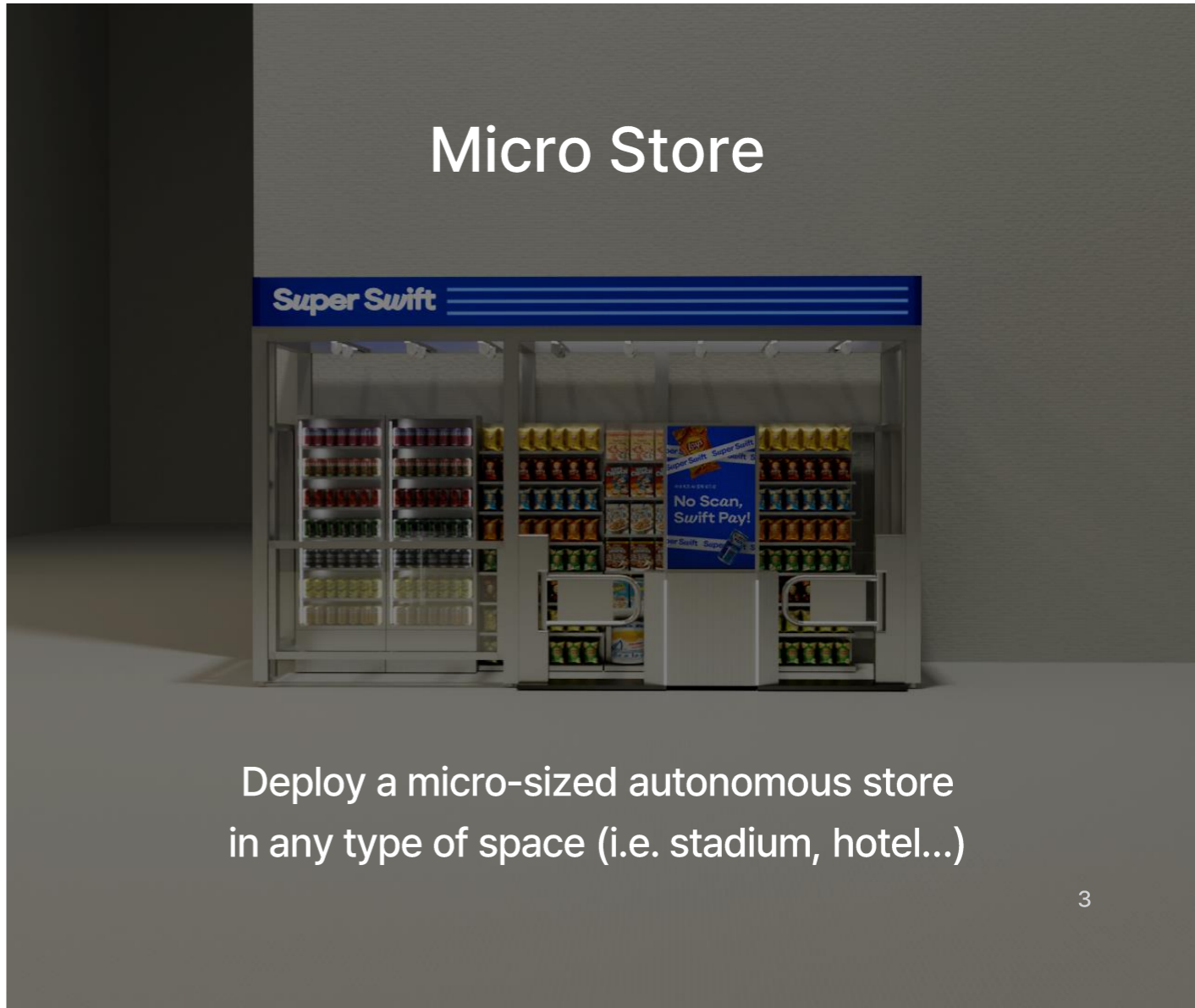
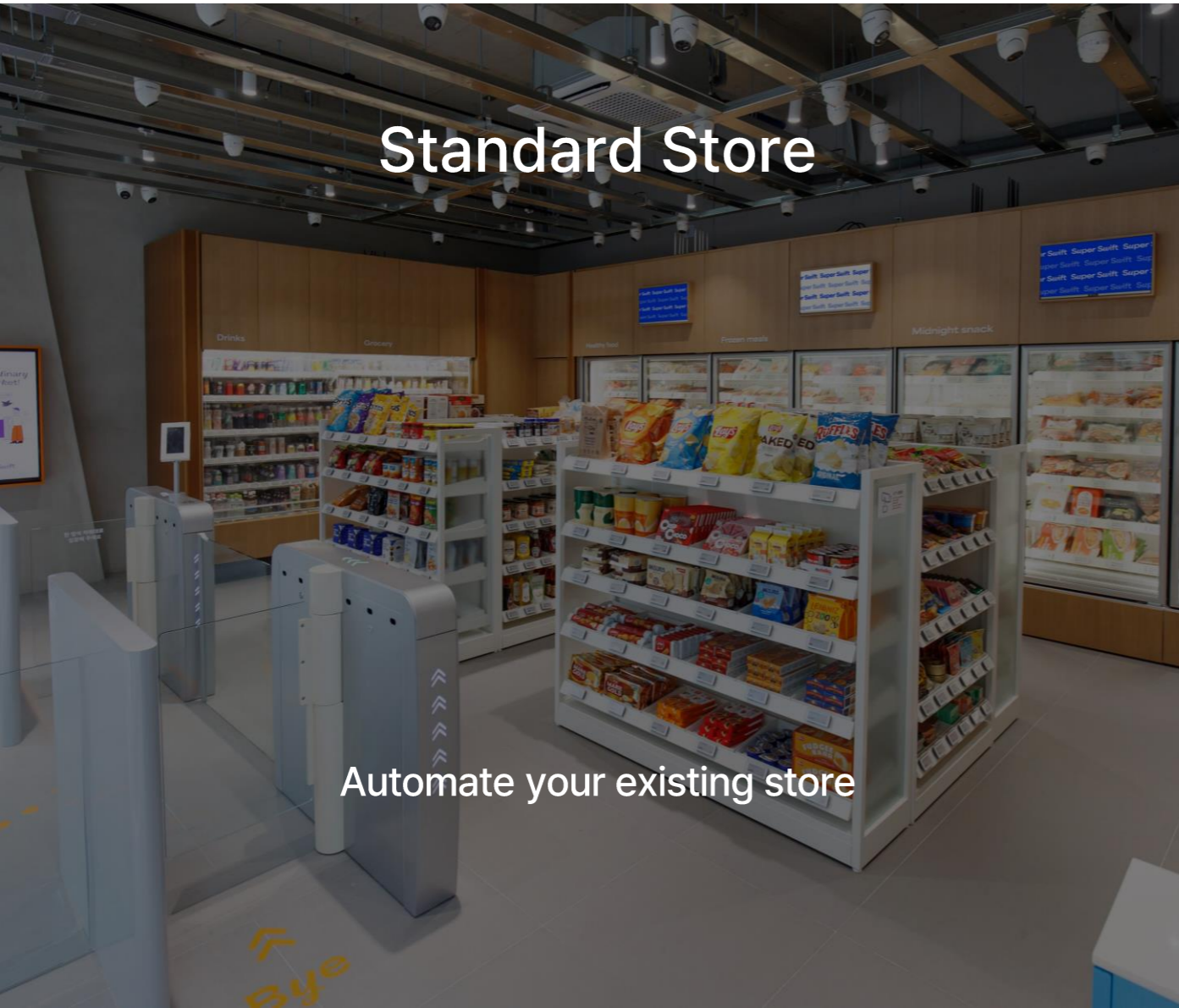
What do we offer?

1. Checkout-free payment
2. Customer analytics
3. Inventory management



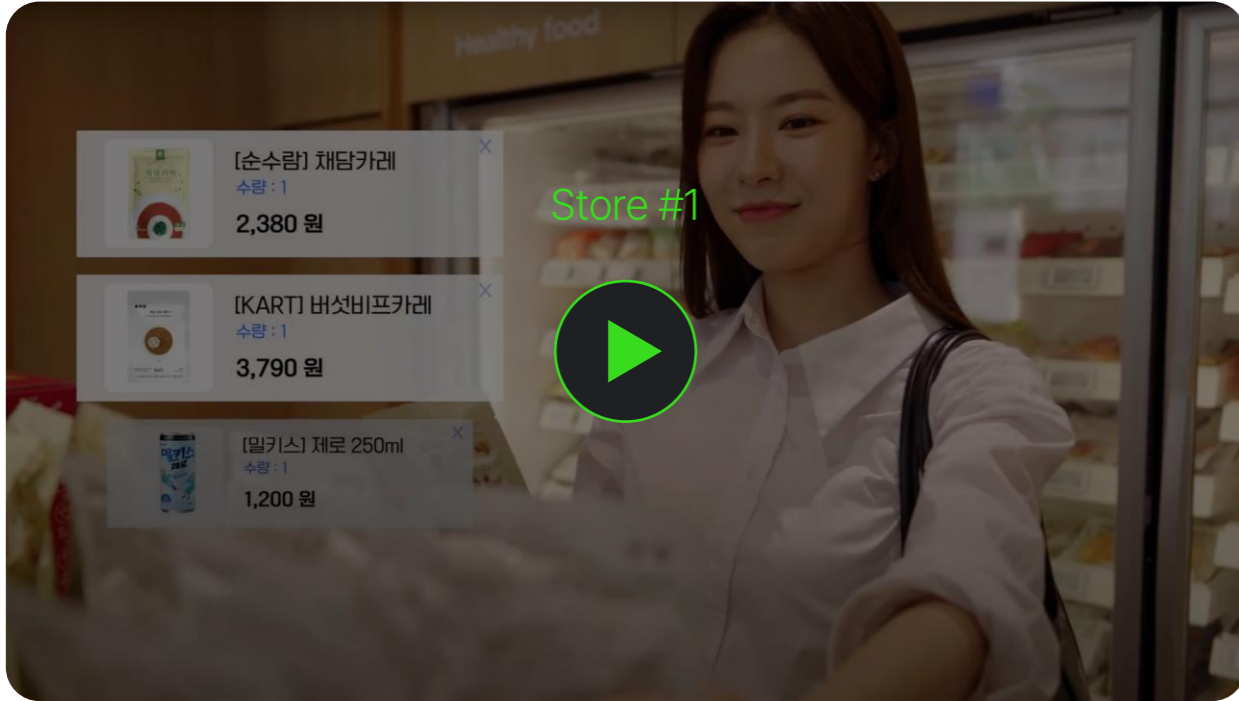
SOLUTION

Automate Existing Stores Or Deploy Micro-sized Prefab Autonomous Stores

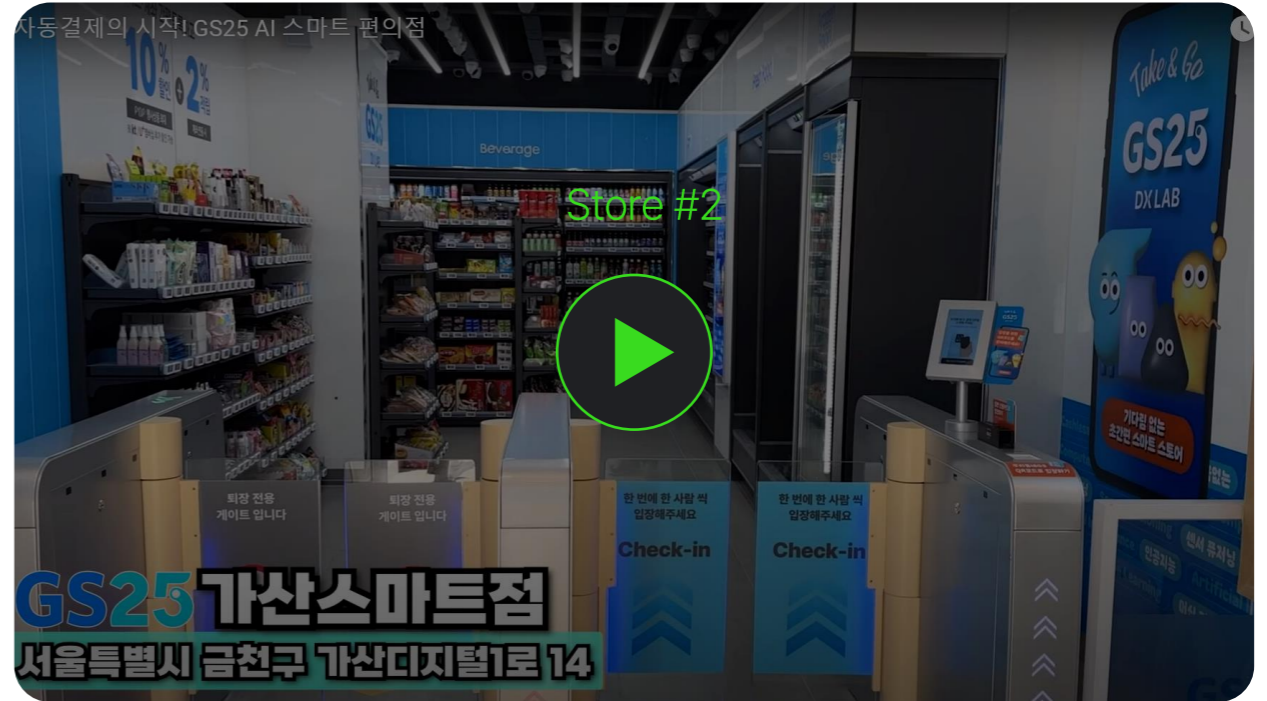


TRACTION

2 Live Stores






Super Swift
MARKET



GS25

DIFFERENTIATION

How Is Our Solution Different From Other Autonomous Stores?

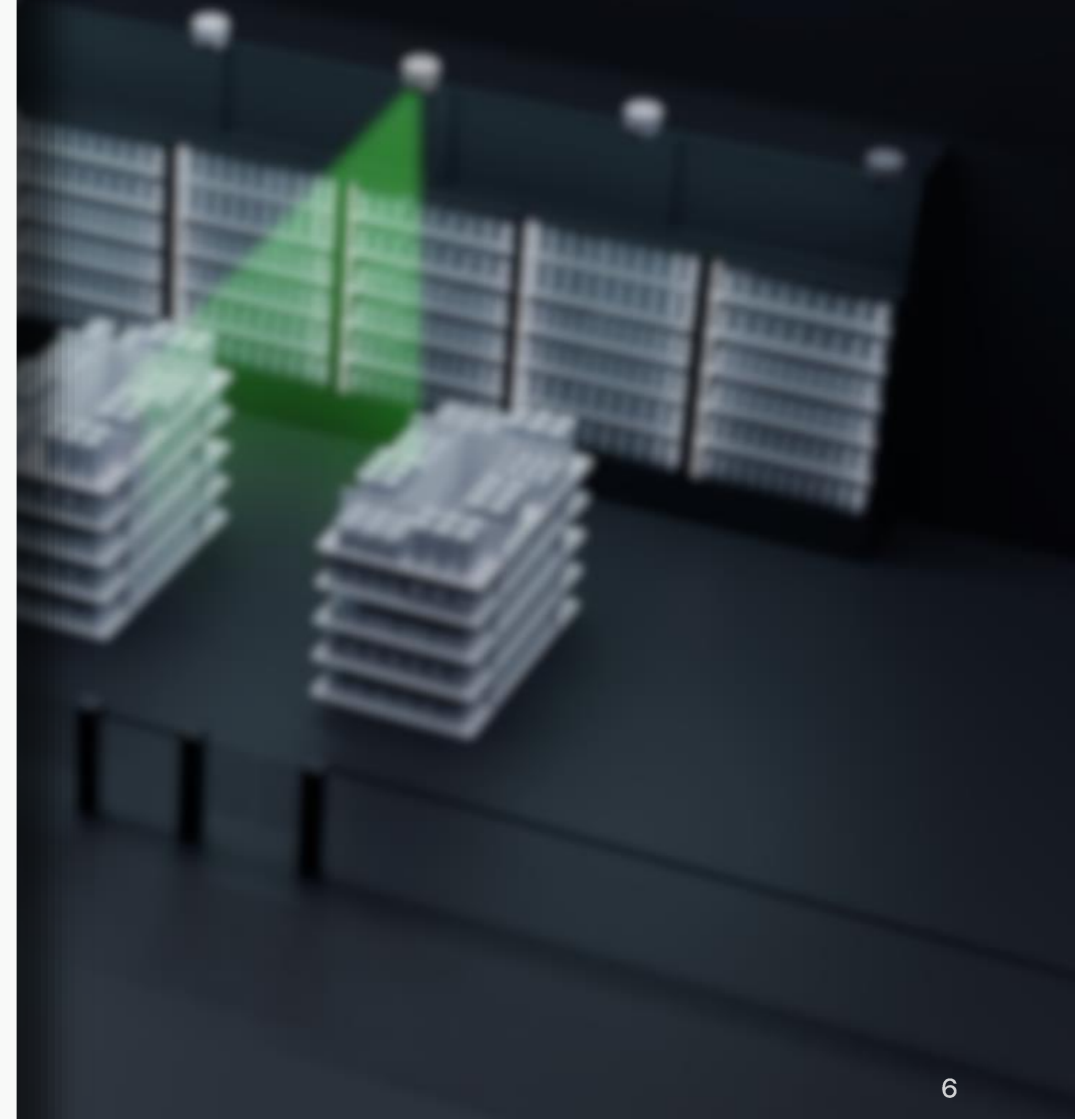
<p>Store Owner</p>  <p>I heard automation is expensive. This solution costs only as much as a part-timer's yearly salary</p> <p>Solution price (50 sqm)*</p> <table border="0"> <tr> <td>Competitor</td> <td>FAI store</td> </tr> <tr> <td>\$230K</td> <td>\$80K</td> </tr> </table> <p><small>* '23 price quote</small></p>	Competitor	FAI store	\$230K	\$80K	<p>Customer</p>  <p>Other autonomous stores are very difficult to enter... Here it is different. I will be visiting here more often</p> <p>Time to entrance</p> <table border="0"> <tr> <td>Other stores</td> <td>FAI store</td> </tr> <tr> <td>> 5min</td> <td>5sec</td> </tr> </table>	Other stores	FAI store	> 5min	5sec	<p>Retailer</p>  <p>Look, we can jam-pack the shelf! We can place more products and sell more than other autonomous stores</p> <p>Shelf capacity (vs normal shelf)</p> <table border="0"> <tr> <td>Competitor</td> <td>FAI store</td> </tr> <tr> <td>50%</td> <td>90%</td> </tr> </table>	Competitor	FAI store	50%	90%
Competitor	FAI store													
\$230K	\$80K													
Other stores	FAI store													
> 5min	5sec													
Competitor	FAI store													
50%	90%													

INVOICE



Walk-Through

Category	Price
Computer	Proportional to store size
2MP Camera	- Proportional to store size - \$50/camera
Smart Shelf (incl. weight sensor)	Proportional to store size
Gate & POS module	-
Installation	Proportional to store size
Customization Service	Proportional to store size
Monthly Fee (New SKU registration, maintenance)	Proportional to store size
Sub Total	0.00
VAT (10%)	0.00
Total	0.00



WANT TO KNOW MORE

contact@fainders.ai



APPENDIX

Co-founders



CEO
Myungwon Han

Seoul Science High School
KAIST, BS in CS
UCLA, MS in CS

Career

- KAIST, Researcher
- Samsung Electronics, Engineer
- Frifree, Co-founder & CTO



CTO, PhD
Sukbum Hong

Seoul Science High School
Seoul National University, BS in EECS
Seoul National University, Ph.D in EECS

Career

- Samsung Electronics, Sr. Engineer
- Frifree, Co-founder & SW Dev



COO
Minkwon Wang

Boston College, BS in Math & Econ
KAIST, MS in I&TM

Career

- Tridge, PM
- Funded, Co-founder & CEO
- WeMakePrice, TF Manager

APPENDIX

Company Overview

Overview Founded in April '20 by computer vision AI experts · 28 members in total

C-Level 3 serial entrepreneurs with vision AI expertise

- Combined 22 years of R&D experience (CEO, CTO)
- Seoul Science High School, SNU, KAIST

Tech Team Highly selective backgrounds

- CS & computer vision related backgrounds
- Highly selective schools (SNU, KAIST, Yonsei univ, Korea univ...)

Business Team From strategy consulting, retail, startups...

- Business Development, HR, Product Design
- Professionals with global backgrounds

Mission
 Convenience to store customers,
 Profitability to retailers & store owners

Fund Raised
Total \$6M
 Seed & Series
 Series A round (\$5.4M) led by a prominent VC investor (July '22)